

NOTES:

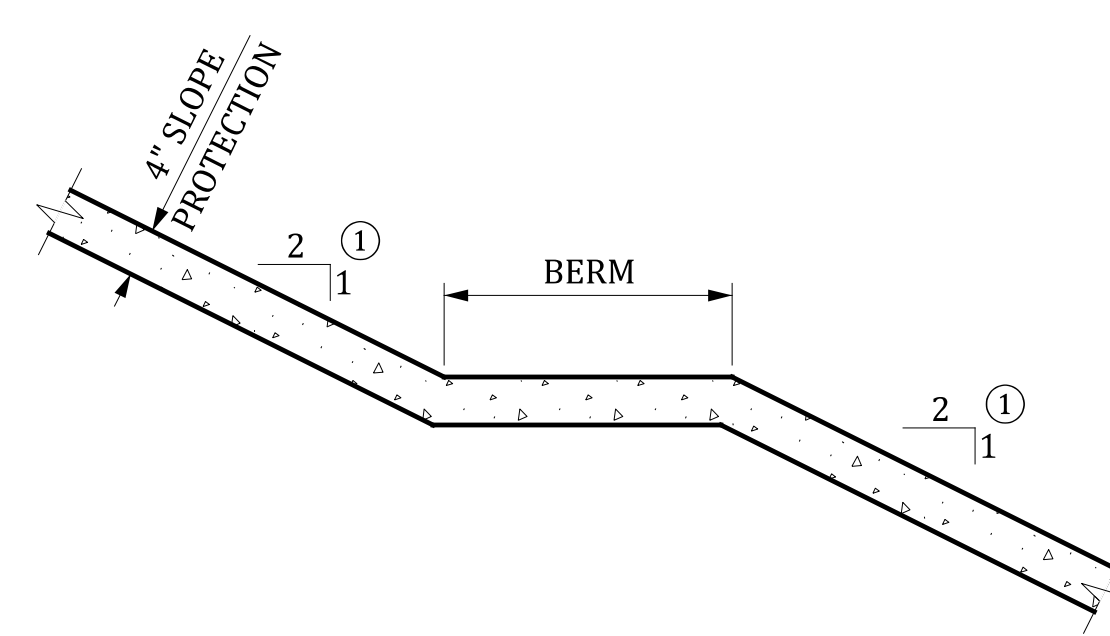
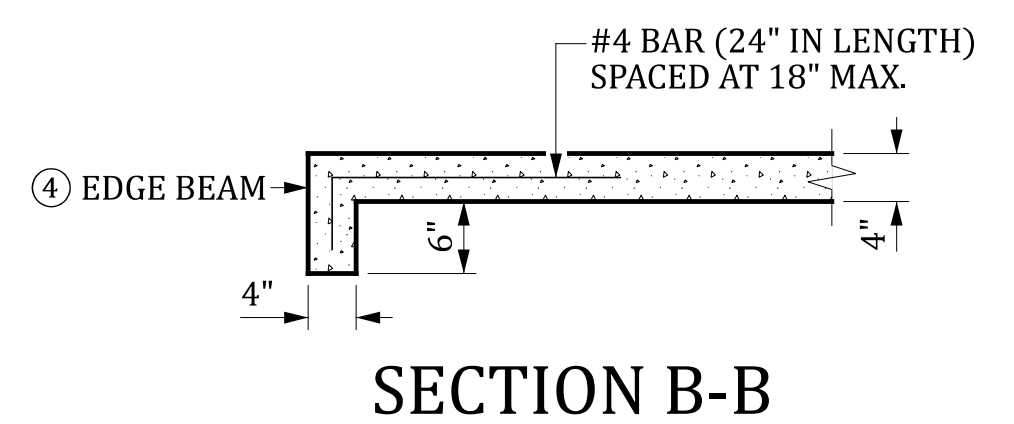
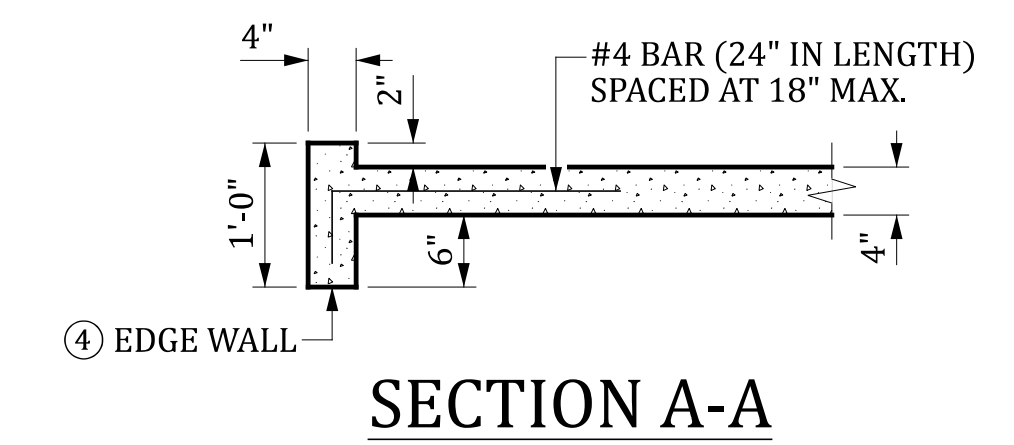
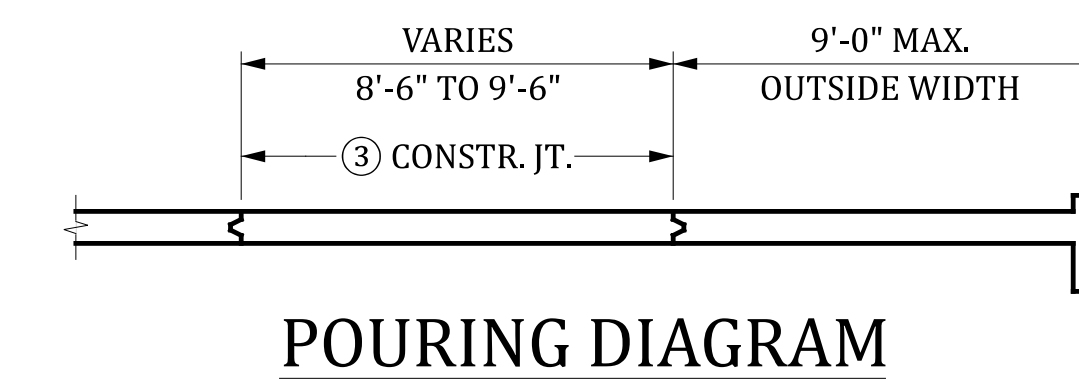
SHAPE AND FIRMLY COMPACT THE FILL SLOPES IMMEDIATELY PRIOR TO PLACING THE SLOPE PROTECTION. REMOVE ANY ORGANIC MATERIAL PRIOR TO PLACING CONCRETE. FINISH THE SURFACE OF THE PAVING IN TRUE PLANES WHERE PRACTICAL AND AS DIRECTED BY THE RCE. SELECT PLANES THAT RESULT IN MINIMUM EXCAVATION AND PROVIDE AN AESTHETICALLY PLEASING APPEARANCE. IN CASE OF ANY DISPUTE, THE RCE'S DECISION IS FINAL.

PLACE 4" CONCRETE SLOPE PROTECTION ON FILL SLOPES AT THE ENDS OF THE BRIDGE. PROVIDE CLASS 2500 (FIBER REINFORCED) CONCRETE WITH 4" NOMINAL THICKNESS ACCORDING TO THE DETAILS AND LIMITS SHOWN ON THIS DRAWING. ADD THE FIBER REINFORCEMENT, IN ACCORDANCE WITH THE APPROVED SUBMITTALS (MINIMUM RATIO OF 1.5 LBS/CY), DIRECTLY TO THE CONCRETE AT THE TIME OF BATCHING. MIX THE CONCRETE ACCORDING TO THE FIBER MANUFACTURER'S RECOMMENDATIONS. COARSE AGGREGATE MEETING THE REQUIREMENTS OF CLASS 3000 CONCRETE MAY BE USED IN THE CONCRETE MIX INSTEAD OF THAT SPECIFIED FOR CLASS 2500 CONCRETE.

INCLUDE ALL COSTS ASSOCIATED WITH FABRICATING, FURNISHING, AND INSTALLING REINFORCING BARS IN THE UNIT PRICE BID FOR SLOPE PROTECTION 4" CONCRETE (FIBER REINFORCED).

FOR AGGREGATE DRAINS, USE #789 AGGREGATE THAT CONFORMS TO THE REQUIREMENTS OF SECTION 406.2 OF THE STANDARD SPECIFICATIONS. INCLUDE ALL COSTS ASSOCIATED WITH EXCAVATION, LABOR, MATERIALS, AND INSTALLATION OF AGGREGATE DRAINS IN THE UNIT PRICE BID FOR SLOPE PROTECTION 4" CONCRETE (FIBER REINFORCED).

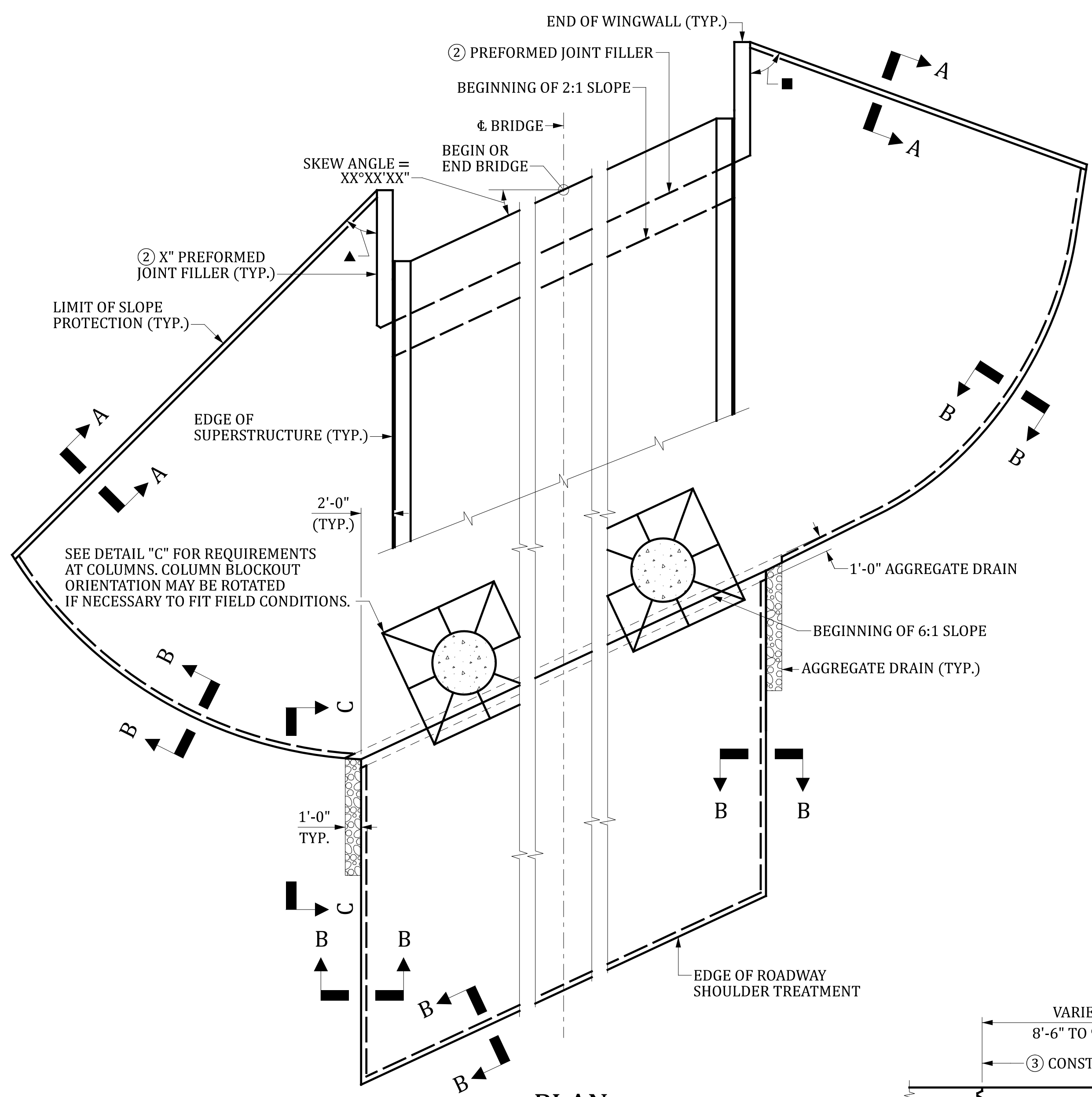
- 1 NORMAL TO END BENT.
- 2 INCLUDE ALL COSTS ASSOCIATED WITH PROVIDING AND INSTALLING PREFORMED JOINT FILLER IN THE UNIT PRICE BID FOR SLOPE PROTECTION 4" CONCRETE (FIBER REINFORCED).
- 3 FORM CONSTRUCTION JOINTS USING KEY-LOC JOINT SYSTEM AS MANUFACTURED BY FORM-A-KEY PRODUCTS OR APPROVED EQUIVALENT. A MINIMUM 24 HOUR INTERVAL IS REQUIRED BETWEEN ADJACENT POURS.
- 4 FOR PAYMENT PURPOSES, INCLUDE AN ADDITIONAL 8" WIDTH MEASUREMENT ALONG EDGES OF SLOPE PROTECTION WITH EDGE WALLS AND AN ADDITIONAL 6" WIDTH MEASUREMENT ALONG EDGES OF SLOPE PROTECTION WITH EDGE BEAMS. THE QUANTITY CALCULATED USING THE ADDITIONAL WIDTH DESCRIBED ABOVE WILL BE FULL PAYMENT FOR ALL EXCAVATION, LABOR, MATERIALS, AND INCIDENTAL COSTS ASSOCIATED WITH CONSTRUCTION OF EDGE WALLS OR EDGE BEAMS.



SECTION WHEN BERM IS IN FILL SLOPE

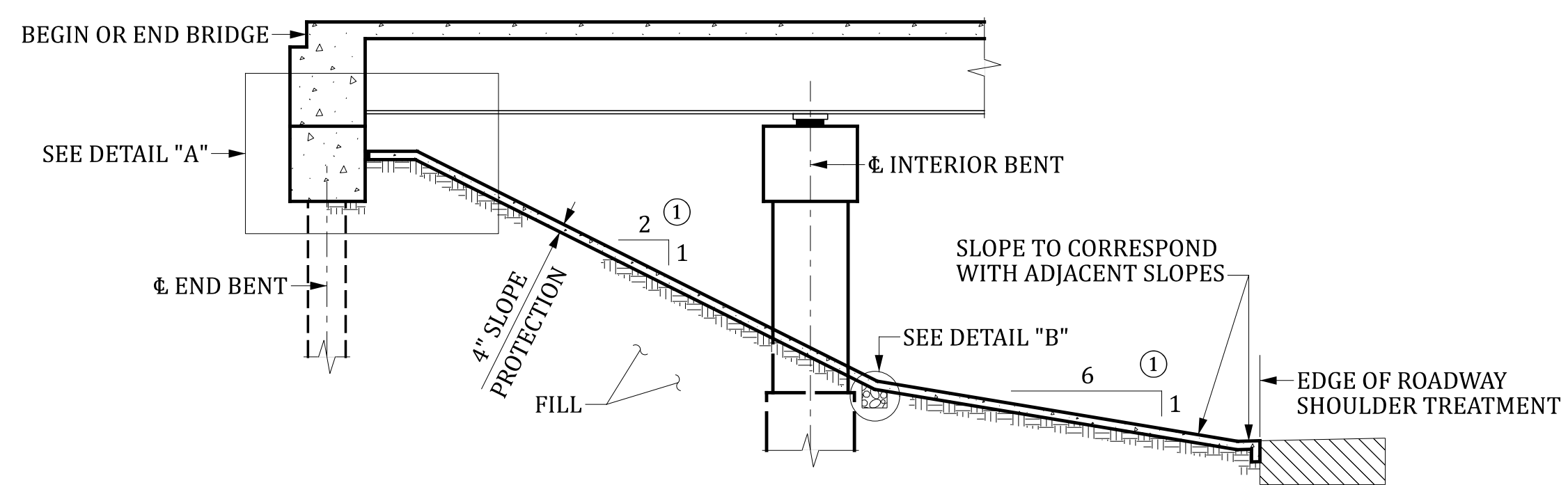
THIS DRAWING IS FURNISHED FOR INFORMATION ONLY. ALL DIMENSIONS SHOWN ARE SHEET SPECIFIC. ANY USE OF THIS DESIGN AND DRAWING, INCLUDING DIMENSIONS, MUST BE CHECKED BY THE USER'S ENGINEER TO ENSURE DESIGN IS ADEQUATE FOR THE INTENDED USE. ALL DRAWINGS MUST BE SIGNED AND SEALED BY A SOUTH CAROLINA REGISTERED PROFESSIONAL ENGINEER WHEN USED.

CONSULTANT NAME/LOGO
SOUTH CAROLINA DEPARTMENT OF TRANSPORTATION
FIBER REINFORCED SLOPE PROTECTION DETAILS - ALT 1
COUNTY: ###
ROUTE: ###

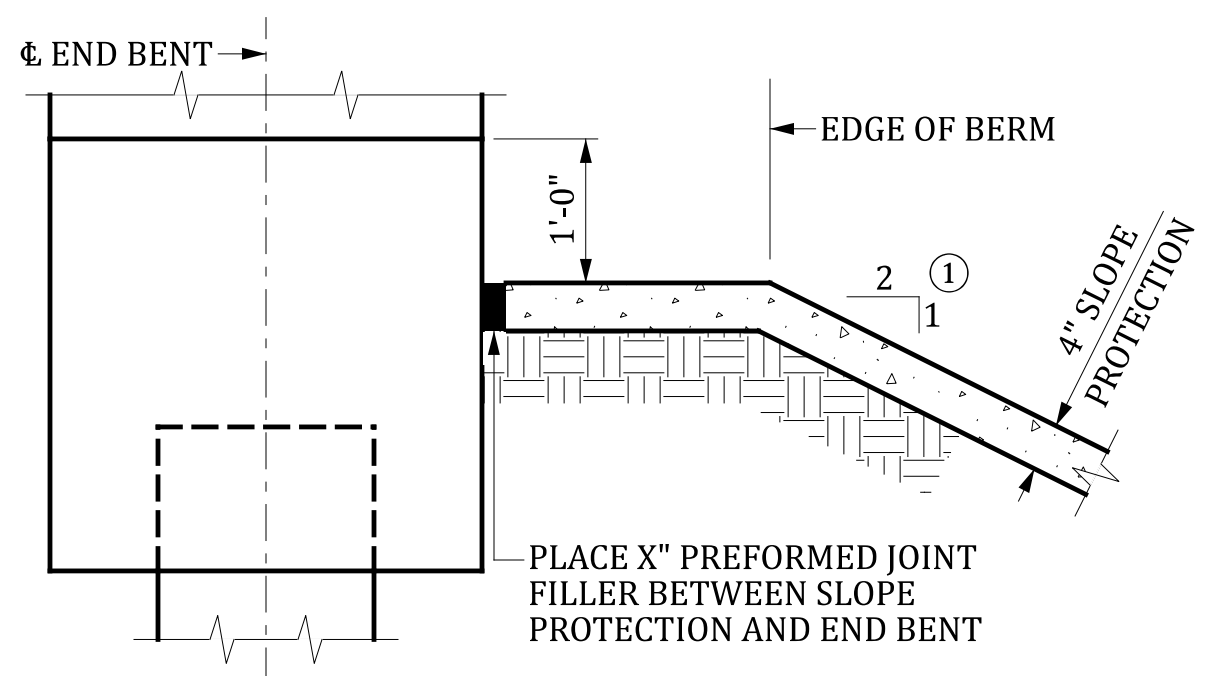


PLAN

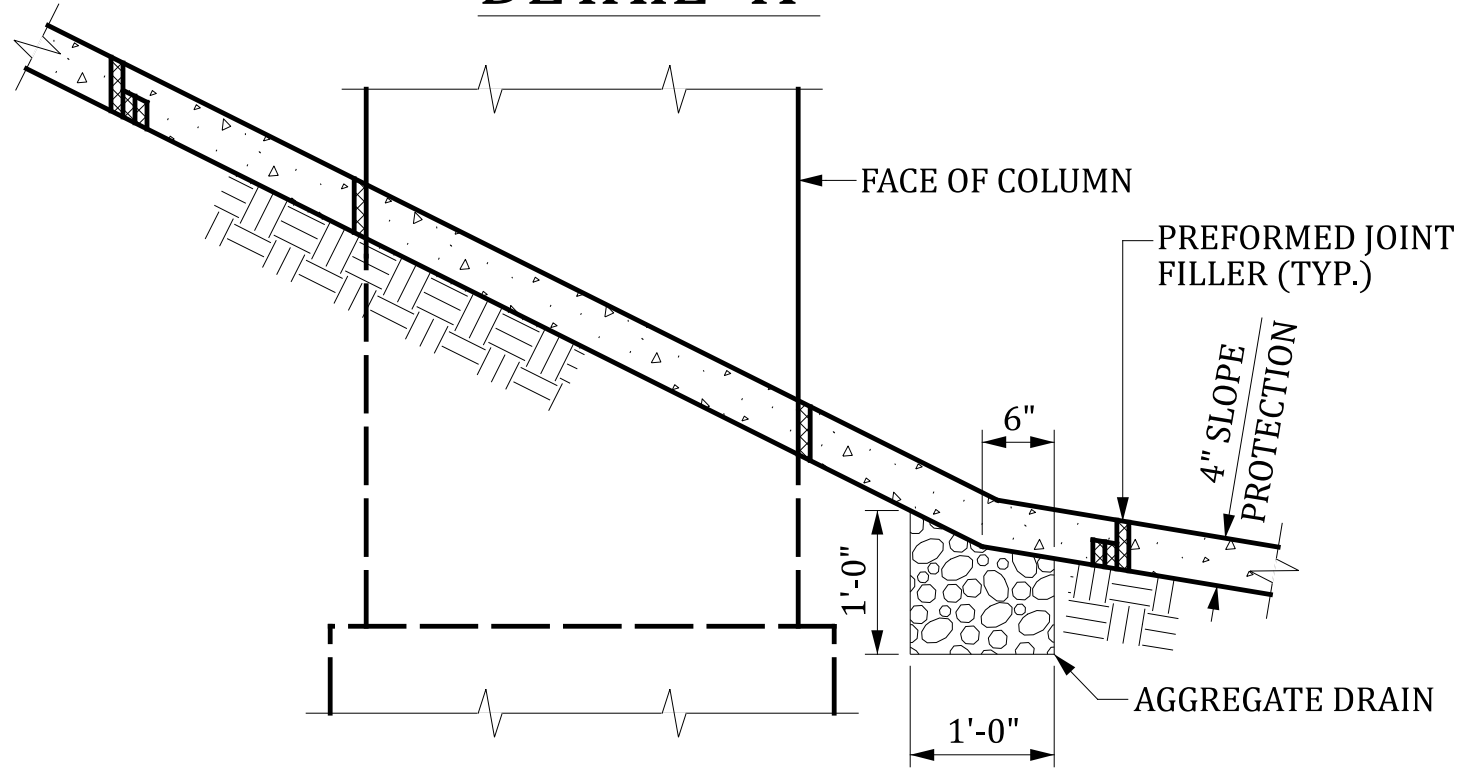
- ▲ (90° - SKEW ANGLE)/2 FOR LEFT SKEW ANGLE SHOWN. IF LAYOUT HAS RIGHT SKEW ANGLE USE (90° + SKEW ANGLE)/2.
- (90° + SKEW ANGLE)/2 FOR LEFT SKEW ANGLE SHOWN. IF LAYOUT HAS RIGHT SKEW ANGLE USE (90° - SKEW ANGLE)/2.



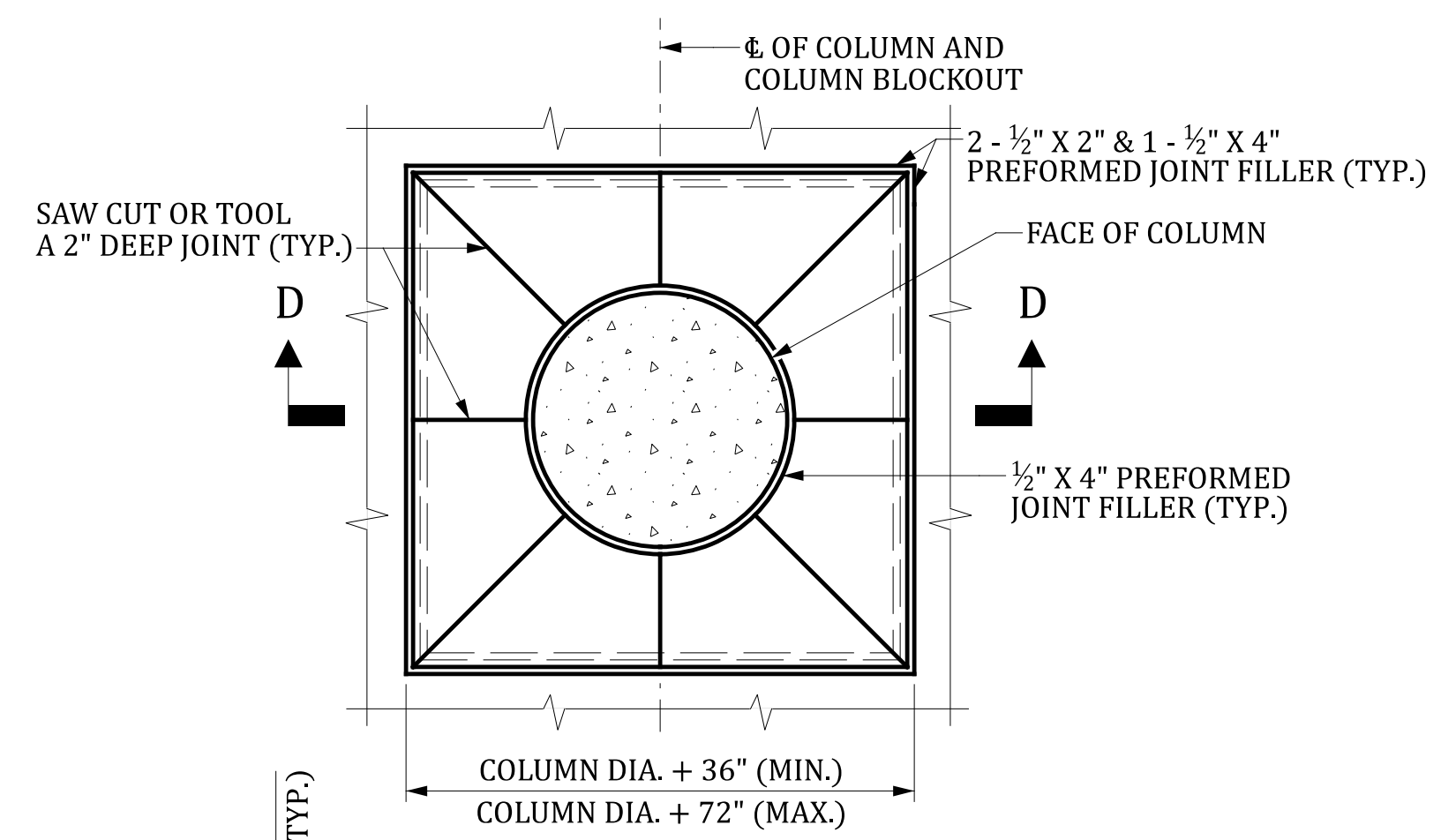
SECTION ALONG CL OF BRIDGE



DETAIL "A"

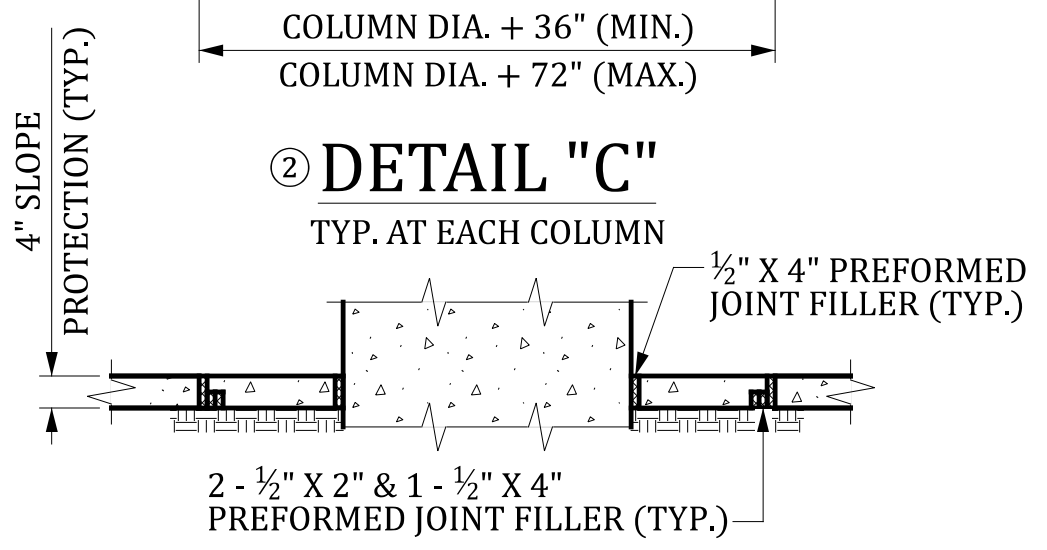


DETAIL "B"

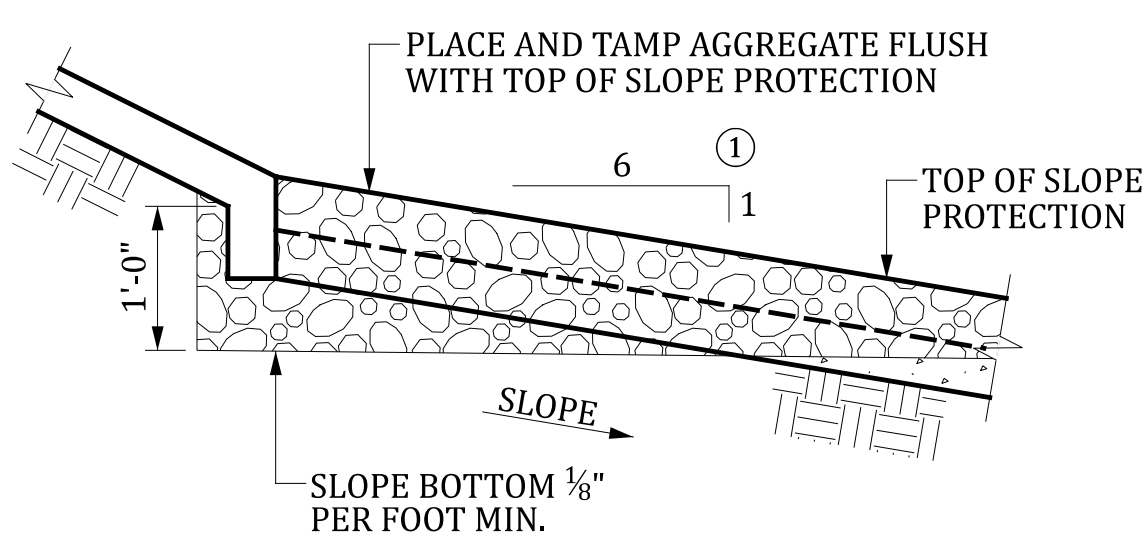


DETAIL "C"

TYP. AT EACH COLUMN



SECTION D-D



ELEVATION C-C

SHOWING TREATMENT OF AGGREGATE DRAIN AT EDGE OF SLOPE PROTECTION

REV.	BY	CHK.	DATE	DESCRIPTION OF REVISION

REVIEWED	QUAN.	DR.	DES.
	DMD	AEL	04-24
	BY	CHK.	DATE

Dylan Danks 7/12/2024 8:52:37 AM 804_SlopeProtection.dgn

NOTES:

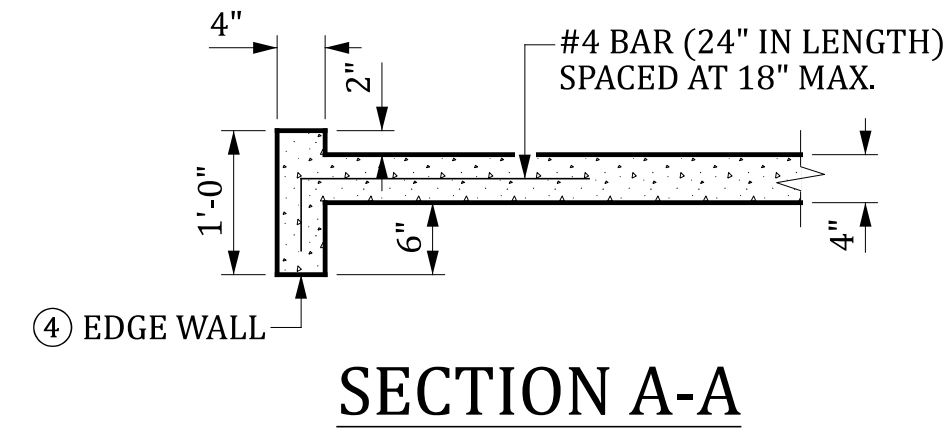
SHAPE AND FIRMLY COMPACT THE FILL SLOPES IMMEDIATELY PRIOR TO PLACING THE SLOPE PROTECTION. REMOVE ANY ORGANIC MATERIAL PRIOR TO PLACING CONCRETE. FINISH THE SURFACE OF THE PAVING IN TRUE PLANES WHERE PRACTICAL AND AS DIRECTED BY THE RCE. SELECT PLANES THAT RESULT IN MINIMUM EXCAVATION AND PROVIDE AN AESTHETICALLY PLEASING APPEARANCE. IN CASE OF ANY DISPUTE, THE RCE'S DECISION IS FINAL.

PLACE 4" CONCRETE SLOPE PROTECTION ON FILL SLOPES AT THE ENDS OF THE BRIDGE. PROVIDE CLASS 2500 (FIBER REINFORCED) CONCRETE WITH 4" NOMINAL THICKNESS ACCORDING TO THE DETAILS AND LIMITS SHOWN ON THIS DRAWING. ADD THE FIBER REINFORCEMENT, IN ACCORDANCE WITH THE APPROVED SUBMITTALS (MINIMUM RATIO OF 1.5 LBS/CY), DIRECTLY TO THE CONCRETE AT THE TIME OF BATCHING. MIX THE CONCRETE ACCORDING TO THE FIBER MANUFACTURER'S RECOMMENDATIONS. COARSE AGGREGATE MEETING THE REQUIREMENTS OF CLASS 3000 CONCRETE MAY BE USED IN THE CONCRETE MIX INSTEAD OF THAT SPECIFIED FOR CLASS 2500 CONCRETE.

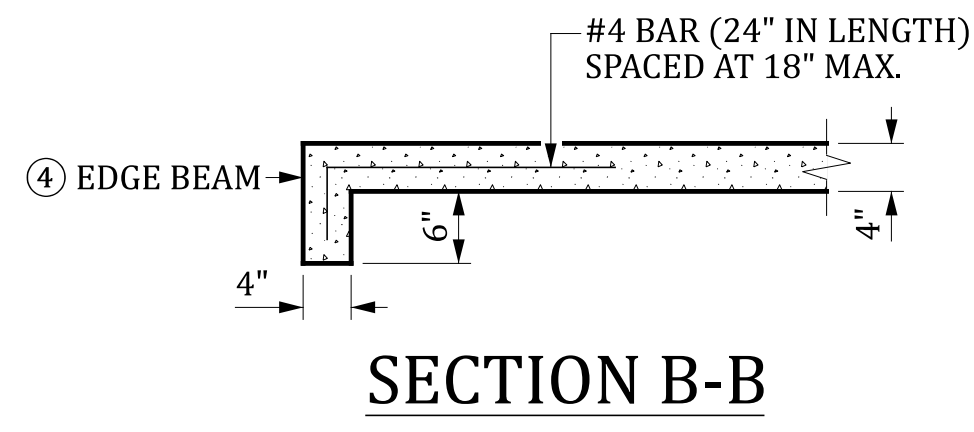
INCLUDE ALL COSTS ASSOCIATED WITH FABRICATING, FURNISHING, AND INSTALLING REINFORCING BARS IN THE UNIT PRICE BID FOR SLOPE PROTECTION 4" CONCRETE (FIBER REINFORCED).

FOR AGGREGATE DRAINS, USE #789 AGGREGATE THAT CONFORMS TO THE REQUIREMENTS OF SECTION 406.2 OF THE STANDARD SPECIFICATIONS. INCLUDE ALL COSTS ASSOCIATED WITH EXCAVATION, LABOR, MATERIALS, AND INSTALLATION OF AGGREGATE DRAINS IN THE UNIT PRICE BID FOR SLOPE PROTECTION 4" CONCRETE (FIBER REINFORCED).

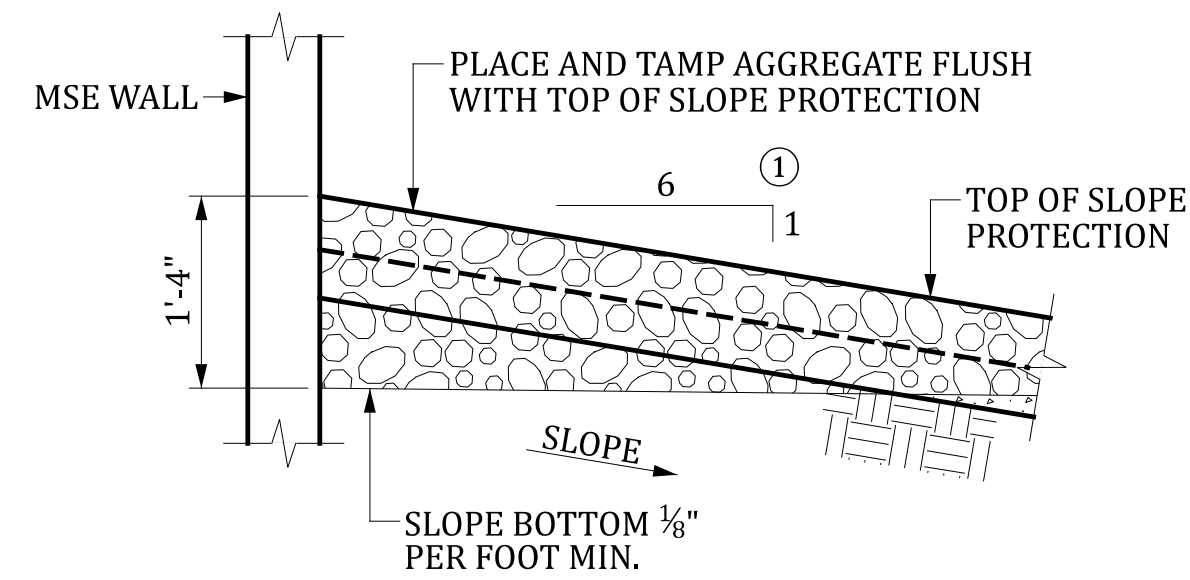
- 1 NORMAL TO END BENT.
- 2 INCLUDE ALL COSTS ASSOCIATED WITH PROVIDING AND INSTALLING PREFORMED JOINT FILLER IN THE UNIT PRICE BID FOR SLOPE PROTECTION 4" CONCRETE (FIBER REINFORCED).
- 3 FORM CONSTRUCTION JOINTS USING KEY-LOC JOINT SYSTEM AS MANUFACTURED BY FORM-A-KEY PRODUCTS OR APPROVED EQUIVALENT. A MINIMUM 24 HOUR INTERVAL IS REQUIRED BETWEEN ADJACENT POURS.
- 4 FOR PAYMENT PURPOSES, INCLUDE AN ADDITIONAL 8" WIDTH MEASUREMENT ALONG EDGES OF SLOPE PROTECTION WITH EDGE WALLS AND AN ADDITIONAL 6" WIDTH MEASUREMENT ALONG EDGES OF SLOPE PROTECTION WITH EDGE BEAMS. THE QUANTITY CALCULATED USING THE ADDITIONAL WIDTH DESCRIBED ABOVE WILL BE FULL PAYMENT FOR ALL EXCAVATION, LABOR, MATERIALS, AND INCIDENTAL COSTS ASSOCIATED WITH CONSTRUCTION OF EDGE WALLS OR EDGE BEAMS.
- 5 SEE MSE WALL SHEETS FOR ADDITIONAL INFORMATION.



SECTION A-A

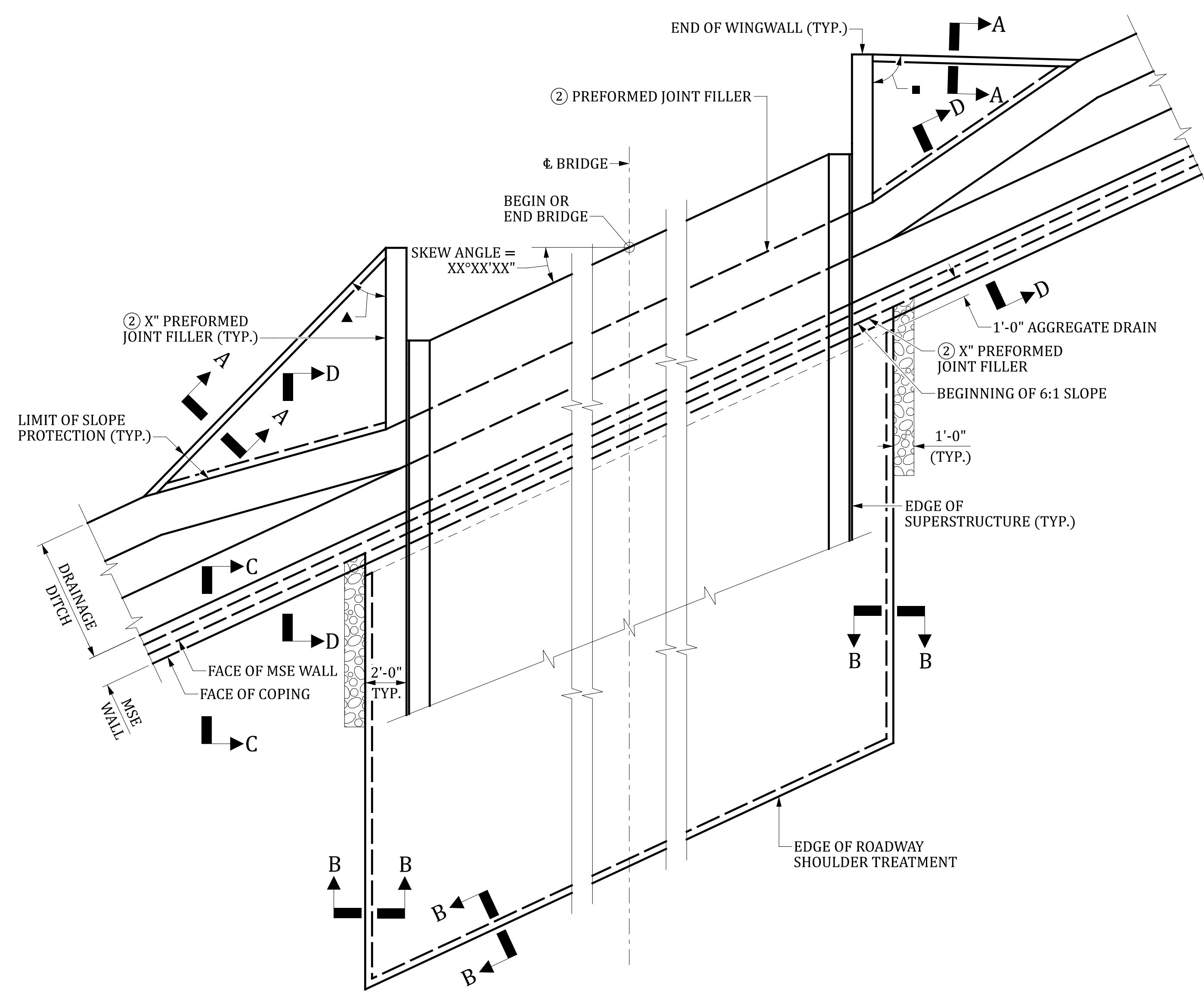


SECTION B-B



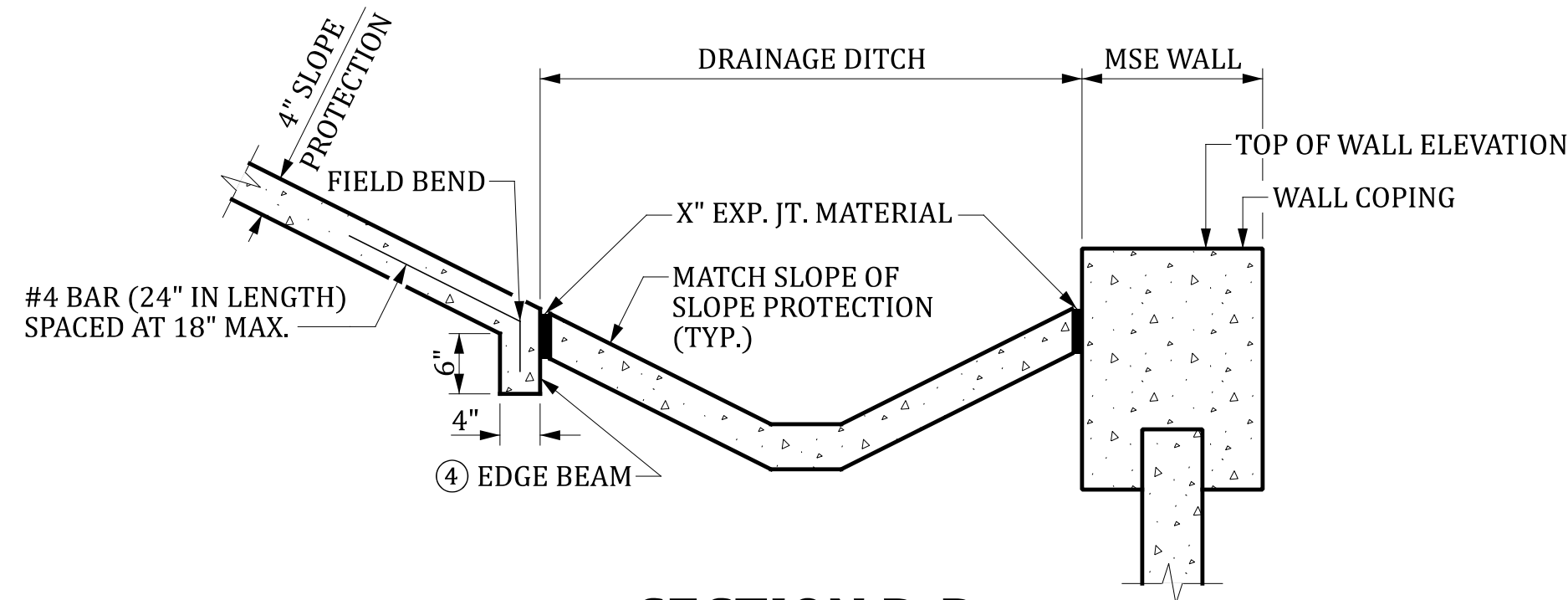
ELEVATION C-C

SHOWING TREATMENT OF AGGREGATE DRAIN AT EDGE OF SLOPE PROTECTION

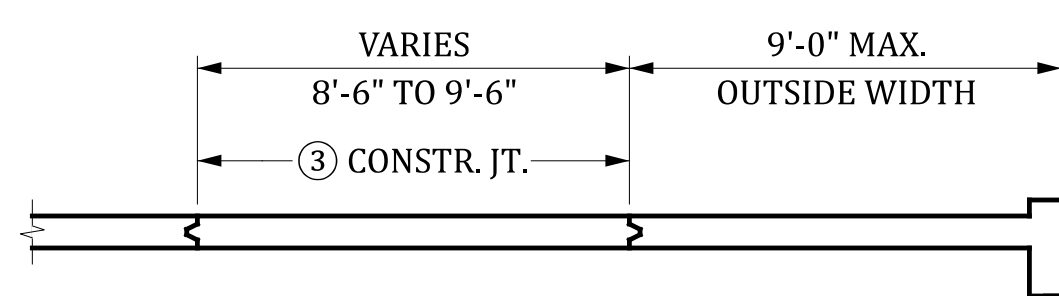


5 PLAN

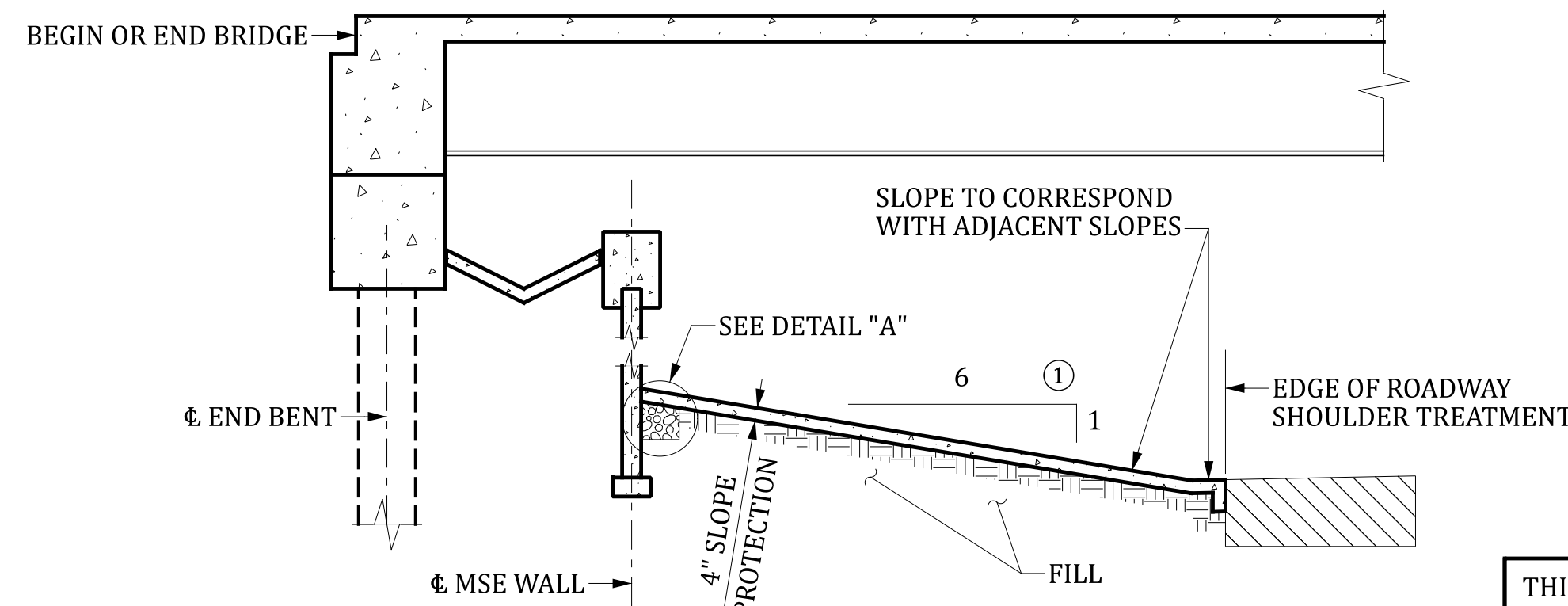
- ▲ (90° - SKEW ANGLE)/2 FOR LEFT SKEW ANGLE SHOWN. IF LAYOUT HAS RIGHT SKEW ANGLE USE (90° + SKEW ANGLE)/2.
- (90° + SKEW ANGLE)/2 FOR LEFT SKEW ANGLE SHOWN. IF LAYOUT HAS RIGHT SKEW ANGLE USE (90° - SKEW ANGLE)/2.



5 SECTION D-D

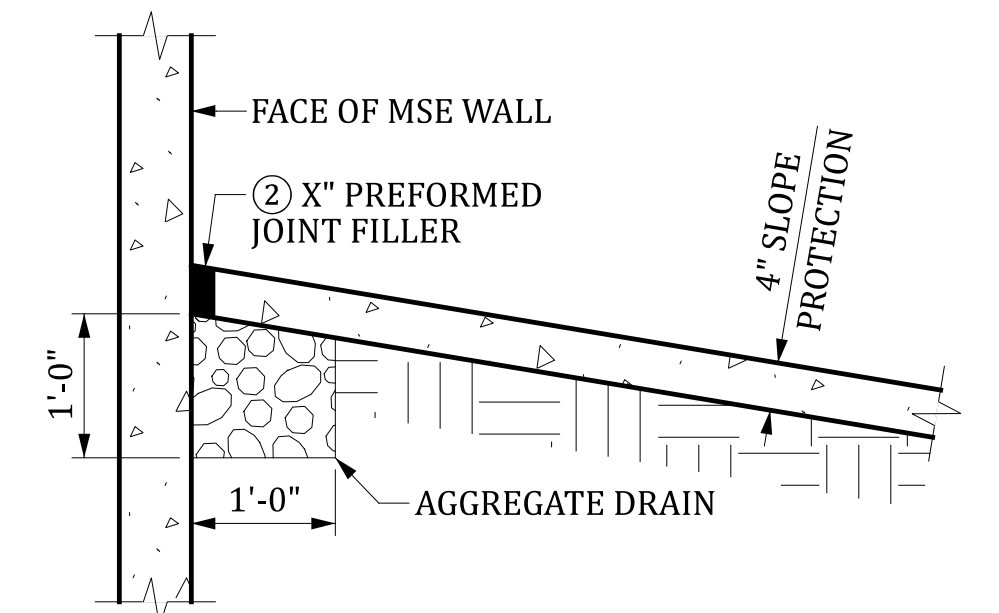


POURING DIAGRAM



5 SECTION ALONG CL OF BRIDGE

SHOWING INTEGRAL ABUTMENT; EXPANSION BENT SIMILAR.



DETAIL "A"

THIS DRAWING IS FURNISHED FOR INFORMATION ONLY. ALL DIMENSIONS SHOWN ARE SHEET SPECIFIC. ANY USE OF THIS DESIGN AND DRAWING, INCLUDING DIMENSIONS, MUST BE CHECKED BY THE USER'S ENGINEER TO ENSURE DESIGN IS ADEQUATE FOR THE INTENDED USE. ALL DRAWINGS MUST BE SIGNED AND SEALED BY A SOUTH CAROLINA REGISTERED PROFESSIONAL ENGINEER WHEN USED.

CONSULTANT NAME/LOGO

SOUTH CAROLINA DEPARTMENT OF TRANSPORTATION

FIBER REINFORCED SLOPE PROTECTION DETAILS - ALT 2

COUNTY: ###

ROUTE: ###

DRAWING NUMBER: 804-FRSP.MSE.DET01

Dylan Danks 7/12/2024 8:52:43 AM 804_SlopeProtection.dgn

REV.	BY	CHK.	DATE	DESCRIPTION OF REVISION

REVIEWED	QUAN.	DR.	DES.	BY	CHK.	DATE